



USER GUIDE GTPMS4BT



Product Features:

1. Real-time monitoring of the tyre pressure and temperature when driving.
2. When the tyre pressure gets to low or temperature becomes too high, the system will alarm you with a sound.
3. Save on fuel. A low tyre pressure will increase the tyres rolling resistance and also the fuel consumption.
4. Bluetooth transmission to smartphone. Just download and open SPY TPMS available on both Android (4.3 and above) and iOS (6.0 and above), to read the tyre pressure and temperature data.
5. Prevent tyres from bursting and reduce abrasion with an alarm to sound of when there is a slow leakage as it monitors tyre pressure balance.

Compatible only with iOS 6.0 and above, Android 4.3 and above with support for Bluetooth 4.0 compatibility.

Package Components:



4X Gator
GTPMS4BT
Transmitters



GTPMS4BT
Receiver



4X Hex Locking
Nuts



Hex Key



Phone Holder



Battery Removal
Tool

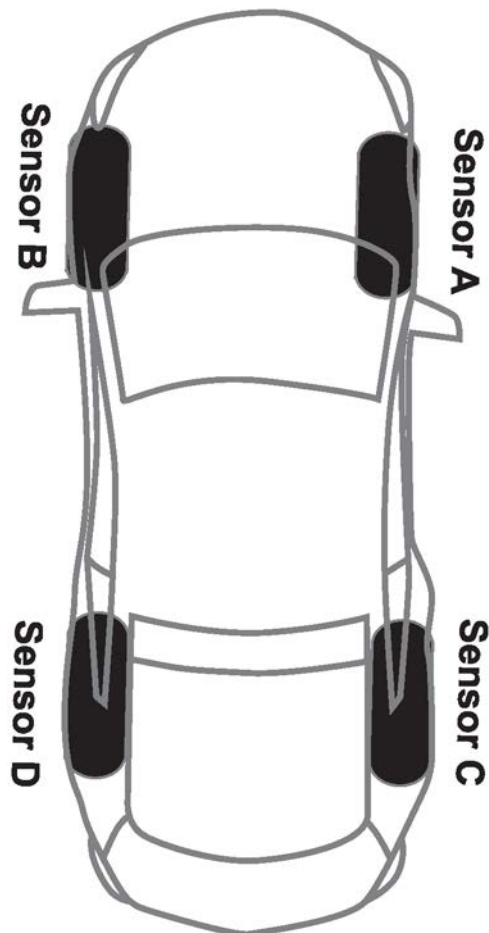
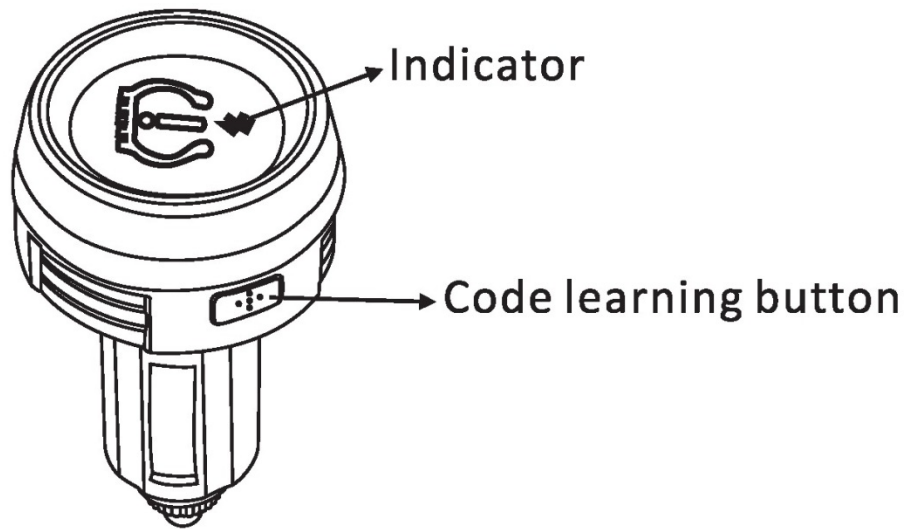


- Product Features:**
1. Real-time monitoring of the tyre pressure and temperature when driving.
 2. When the tyre pressure gets too low or temperature becomes too high, the system will alarm you with a sound.
 3. Save on fuel. A low tyre pressure will increase the tyre's rolling resistance and also the fuel consumption.
 4. Bluetooth transmission to smartphone. Just download and open SPV TPMS available on both Android (4.3 and above) and iOS (8.0 and above), to read the tyre pressure and temperature data.
 5. Prevent tyres from bursting and reduce abrasion with an alarm to sound of when there is a slow leakage as it monitors tyre pressure balance.

Compatible only with iOS 8.0 and above; Android 4.3 and above with support for Bluetooth 4.0 compatibility.

GTPMS4BT
User Guide

Product Structure:



How to install the Tyre Pressure sensor on a tyre

1. Screw out the valve cap on your tyre



2. Screw in the hex nut



3. Put in the gasket



4. Take the correct sensor and fasten the sensor to the valve



5. Use the spanner to fasten



6. Check any air leakage with soapy water.



How to install the Tyre Pressure Receiver



Simply install the receiver into a cigarette lighter socket
No pairing is needed

In an event where another sensor is needed, simply install new sensor onto the tyre pressure valve and hold the down the code learning button on the receiver for a couple of seconds. This will automatically pair with your new sensor.

How to replace battery in sensor

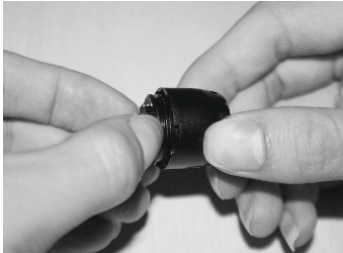
1. Release the hex nut using the spanner



3. Remove Gasket



5. Remove the Sensor from the shell



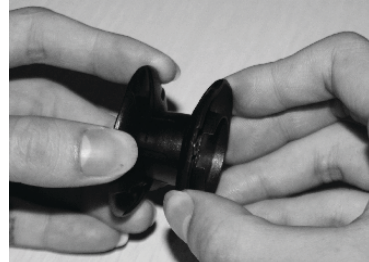
7. Reinstall Sensor



2. Loosen the Sensor by rotating it out



4. Unscrew the Sensors shell using the Battery Removal tool



6. Replace the button battery

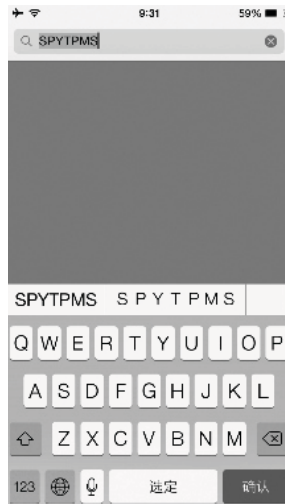


How to install SPY TPMS application on mobile device

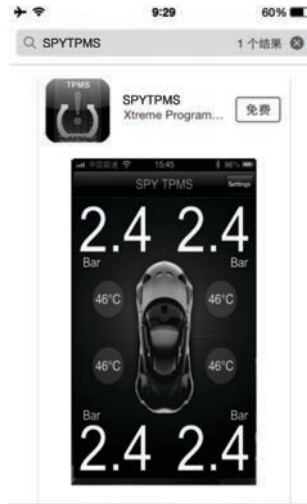
(NOTE: Same method for Android Devices)



Go to the App Store or Google Play Store on your mobile device



Type in "SPYTPMS"



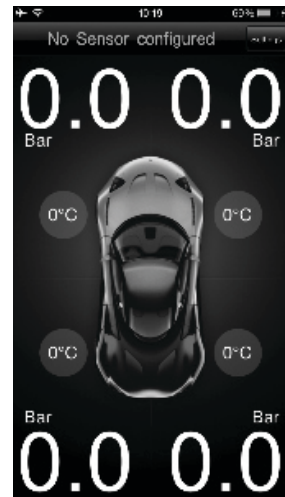
Download and install the free app "SPYTPMS"



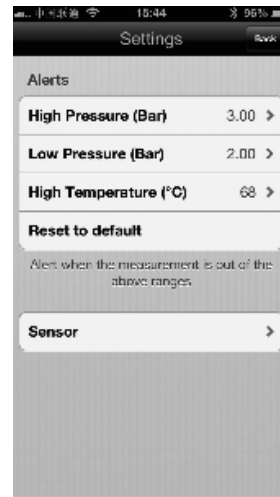
Turn on Bluetooth in your settings



Open the "SPYTPMS" application



Touch the 'Settings' button on the top right section of the application



Touch the 'Sensor' button to begin Bluetooth pairing with the GTPMS4BT



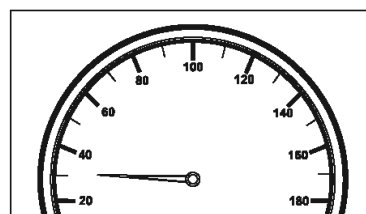
Make sure that the receiver is powered. If so then it should appear here. Click on it within 20 seconds to pair with it.



You will know the matching is successful when it says 'SPYTPMS' along the top.



Now you should test drive the vehicle to determine whether it shows the correct statistics.



The system will automatically refresh the display when driving speed is over 20km/h

Data

- Display operation voltage: 12V±3V Only
- Default alarm value:
 - High pressure:
 - 3.0bar
 - 300Kpar
 - 43.5psi
 - Low pressure:
 - 2.0bar
 - 200Kpar
 - 29psi
 - High temperature: 68°C
- Sensor operation voltage: CR1632 3.0V
- Sensor detection range: OKPar-349KPar
 - Obar-3.5bar
 - OPsi-50.

Frequently Asked Questions

Under normal operating conditions, if there are problems with the device, please refer to the following methods to resolve.

Air leakage from sensor connection

It may rise from the nick of the valve. Please change a new valve.

Sensor Loss

Purchase a spare sensor from the manufacturer and match the code.

Battery flat

Please replace it the battery with a CR1632 button battery, using the method above

Attention

This product is design for the car with a tyre pressure under 3.5 Bar and with 12 voltage power supply. Please regularly check the tyre condition and make sure there is no puncture, crack, bulge etc. This product is unable to prevent or forecast a sudden accident that may arise from the outside force. The battery service life depends on the amount of travel. This product should only be used within the ambient temperature of -20°C to +60°C and the inside of the tyres temperature should be between -40°C to 125°C.

Technical Assistance

If you need assistance setting up or using your Gator product now or in the future, call Gator Support.

Australia

TEL: 03 – 8587 8898

FAX: 03 – 8587 8866

Mon-Fri 9am – 5pm AEST

Please retain this user guide for future reference.

